

# VersaPOD™

## Racks and Cable Management

Siemon offers a comprehensive family of data centre cabinets, equipment racks and cable management products to support nearly any infrastructure.

This family includes:

- **The innovative VersaPOD data centre cabinet, featuring space-saving Zero-U vertical patching and cable management**
- **RS3 and RS open rack systems with integrated cable management features**
- **Vertical Patching Channels (VPC), designed to mount between racks to provide an easily managed cable routing and management solution**
- **A wide array of horizontal cable management options**

### SECTION CONTENTS

VersaPOD Features and Benefits .....	10.1
VersaPOD Ordering Information .....	10.2 – 10.4
RS3 Cable Management Rack System .....	10.5 – 10.6
RS3 Series Horizontal Cable Managers .....	10.6
RS Rack System .....	10.7 – 10.8
Extended Depth RS Rack System .....	10.8
RS Series Horizontal Cable Managers .....	10.8
Vertical Patching Channel (VPC) .....	10.9 – 10.10
Vertical Cable Management Channels .....	10.10
Rear Cable Manager .....	10.11
WM Series Horizontal Cable Managers .....	10.11
Cable Hangers .....	10.11
Stand-Off Brackets .....	10.12

## VersaPOD™ Features and Benefits

Siemon's VersaPOD enables a completely new and efficient approach to your physical data centre infrastructure. By leveraging the vertical space between bayed cabinets and at the end of row for patching, power distribution and cable management, the V-POD frees critical horizontal space for active equipment, providing improved air flow and the ultimate density in the minimum floor space.

The VersaPOD's innovative Zero-U vertical patch panels (VPP's) dramatically simplify even the most dense patching needs while its vertical patching channels (VPC) offer a clean, orderly and easily manageable method of high-density cable routing.

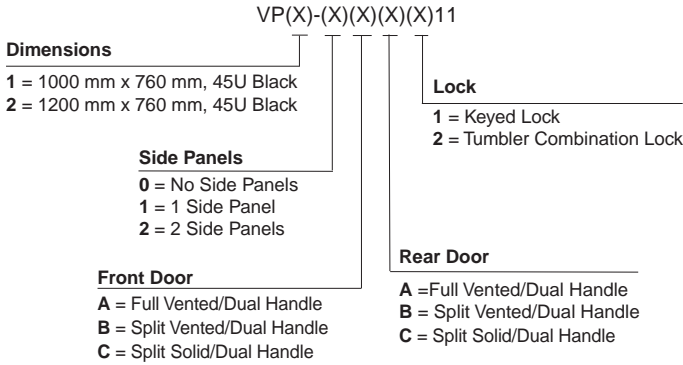
All of the VersaPOD's unique features are integrated into a full-featured modular enclosure that is equally effective as a standalone cabinet or in a multi-unit bayed configuration, offering a simple, scalable expansion path in any datacentre.



- 1 Vertical Patching** – Vertical copper and fibre patch panels provide up to 24U (12U at front and 12U at rear) of Zero-U vertical patching space between every two cabinets. These panels conveniently slide forward providing access to the connections at the rear of the panel
- 2 End of Row** – End of row vertical panels offer additional cable management channels or up to 8U additional Zero-U mounting space (4U in front and 4U in back at each end)
- 3 Integration** – In addition to patching, the VersaPOD's Zero-U vertical space can be leveraged with integrated cable management options and dual-hinged door to offer a high capacity and concealable pathway for cable routing and slack management.
- 4 Cable Management** – Vertical cable management fingers can be mounted alongside each VPP or VPC to facilitate routing of copper or fibre jumpers between patching fields as well as cabinet to cabinet connections.
- 5 Dual Hinged Doors** – Dual hinged front and quad hinged rear doors open from either the left or right and are easily removed. Rear split doors can be hinged open in both directions providing direct access to vertical spaces. For standalone cabinets or end units, side panels can be removed for full side access.

# VersaPOD™ Ordering Information

## CABINET BASE UNIT



Includes: 4 leveling feet, 50 cage nuts and 4 stabilising brackets

## CABINET DOORS AND PANELS

Part #	Description
VP-DRA	Full vented door, dual handle with standard keyed lock
VP-DRB	Split vented door, dual handle with standard keyed lock (2 doors required to close front or rear of single cabinet)
VP-DRC	Split solid door, dual handle with standard keyed lock (2 doors required to close front or rear of single cabinet)
VP-S	Locking Side Panel (standard keyed lock)

## ZERO-U SLIDING VERTICAL PATCH PANELS

Part #	Description
VP-VPP-TMRICT	Sliding Vertical Copper/Fibre Combo Patch Panel - 96 Ports, support all category 5e and category 6 UTP MAX and Z-MAX, category 6A shielded Z-MAX outlets, TERA® outlets and MAX fibre adaptors. (Not for use w/Z-MAX 6A UTP 6 fibre RIC adaptor mounting spaces for mounting RIC adapter plates or fibre plug and play modules)
VP-VPP-TM	Sliding Vertical Copper Patch Panel - 96 Ports, supports all category 5e category 6, category 6A UTP MAX and Z-MAX outlets, category 6A shielded Z-MAX, TERA outlets and MAX fibre adaptors (Port spacing compatible with Z-MAX 6A UTP)
VP-VPP-6U	Sliding Vertical Bracket for any Standard 19" Patch Panel - Mounts up to (6) 1U panels in Zero-U vertical orientation



NOTE: 2 Vertical Panels can be mounted vertically at the front and/or rear of 2 bayed cabinets

# VersaPOD™ Ordering Information

## END-OF-ROW VERTICAL PANELS

Part #	Description
VP-VWM	Vertical Wire Manager Panel, end of row
VP-VPP-2U	Vertical Bracket for standard 19" rack mount products, end of row, mounts up to (2) 1U panels in Zero-U vertical orientation
VP-BLNK 1	Vertical Blanking Panel, end of row

Note: 2 Vertical Panels can be mounted vertically at the front and/or rear on each side of a single cabinet or at each end of multiple bayed cabinets



## VERTICAL CABLE MANAGEMENT

Part #	Description
VP-FGR(X)	Vertical Cable Management Fingers, length: 965.2mm (38 in.)
VP-VPC(X)	Vertical Patching Channel, with cable management fingers and cover, 177 mm x 996 mm (7 in. x 39.25 in.)
VP-TRAY2	Vertical Cable Management Tray (manages/secures cable between cabinets, use 4 trays to isolate airflow between cabinets)
VP-FP	Vertical Filler Panel used to fill additional space between vertical cable management trays on VP2 cabinets
RS-VCM	Box of 10 quarter-turn hook and loop cable managers (can be installed in VP-TRAY2, VP-VPC and VP-VWM)
VP-SPL	Quarter-Turn Fiber Management Spool, bag of five (can be installed in VP-VPC and VP-VWM panels)

Use (X) to specify finger length:  
 Blank = 4" (101.4mm) fingers, for use with VP1 or VP2 cabinets  
 6 = 6" (152.4mm) fingers, for use with VP2 cabinets only



## HORIZONTAL CABLE MANAGEMENT

Part #	Description
RS3-RWM(X)-1	Single Sided 19" cable manager, 1U, dual hinged/removable cover
RS3-RWM(X)-2	Single Sided 19" cable manager, 2U, dual hinged/removable cover
RS3-RWM(X)-4	Single Sided 19" cable manager, 4U, dual hinged/removable cover

Use (X) to specify finger length:  
 Blank = 4" (101.4mm) fingers, for use with VP1 or VP2 cabinets  
 6 = 6" (152.4mm) fingers, for use with VP2 cabinets only



## BLANKING PANELS

Part #	Description
VP-BLNK	Vertical Blanking Panel, (fits in standard VPP opening between 2 bayed cabinets)
PNL-BLNK-(X)	Horizontal Blank Filler Panel, 19" 1 = 1U, 2 = 2U, 3 = 3U, 4 = 4U



VP-BLNK



PNL-BLNK-1

## ACCESSORIES

Part #	Description
VP-PDU-001	VersaPOD PDU Mounting Brackets, Black (Set of 2)
VP-FAN-EU1	POD,ACCESSORY,CABINET COOLING FAN,230-240V,BS1363
VP-FAN-EU2	VPOD,ACCESSORY,CABINET COOLING FAN,250V,CEE 7/7
VP-T3	127mm x 444mm (5 in x 17.5 in.) Brush Guard (for main top panel cable opening)
VP-BRUSH	41.3m x 279mm (1.625 in. x 11 in.) Brush Guard (for perimeter top panel cable openings)
VP-W	Castors, set of four
VP-FT	Leveling Feet, set of four
VP-BAY	VP1 Baying Kit, bracket and hardware (secures 2 VP1 cabinets together)
VP-BAY2	VP2 Baying Kit, bracket and hardware (secures 2 VP2 cabinets together)
VP-GRD	Grounding Kit - ground bar, ground wire, mounting hardware and accessories (capacity to support all required grounding connections for a single cabinet)
VP-SB	Stabilizing Brackets, set of four (secures cabinet to floor)
SH-S19-01	Single Sided Equipment Shelf - Solid -19 in.
SH-S19V-01	Single Sided Equipment Shelf - Vented -19 in.



VP-FAN-EU1



VP-T3



VP-W

VP-FT



VP-GRD



SH-S19V-01

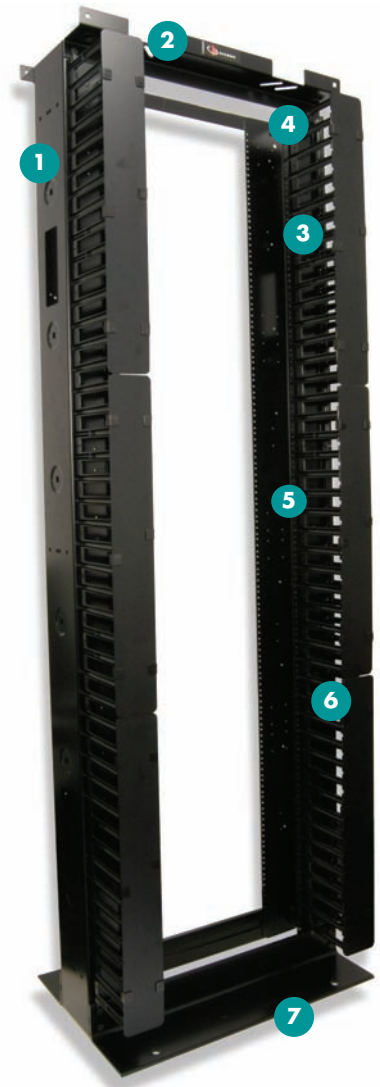
NOTE: Visit [www.siemon.com/versapod](http://www.siemon.com/versapod) for a chart detailing the cable capacity of VersaPOD's various cable entry points and cable management zones.



# RS3 Cable Management Rack System

Siemon's RS3 series cable management rack system provides high capacity cable management for routing of both horizontal / backbone cabling and patch cords. Vertical channels with hinged cable manager covers conceal and route patch cables for a clean, professional installation.

- 1 **High Capacity** – 76mm x 152mm front vertical managers provide capacity for approximately 190 category 6 patch cords
- 2 **Cable Tray Compatibility** – Header bars incorporate unique slotted holes for securing cable trays routed perpendicular or parallel with RS3 racks
- 3 **Side Stackable** – RS3 design allows racks to be side-stacked without interference between adjacent racks
- 4 **Deeper Channels** – 116.8mm x 152.4mm vertical side rails provide higher cable capacity over standard rack designs
- 5 **Flexible Management** – Side rails compatible with Siemon's quarter-turn hook and loop cable managers for proper management of cable bundles
- 6 **Cable Access Holes** – Access holes on side rails allow cables to be routed between adjacent racks
- 7 **Anchoring** — Mounting holes provided for anchoring racks to floor



## Hinged Front Covers



Front covers fully conceal all vertical patch cord routing through an easy to use, modular design. Each section can be individually hinged in either direction to facilitate quick and easy changes. Covers include positive securing snap latches for trouble-free fastening.

## Rounded Managers



The individual managers on the vertical channels are rounded to allow patch cords to seamlessly enter and exit the managers without risk of cable deformation.

## Matching Horizontal Managers



Siemon's RS3 series horizontal cable managers provide a fully integrated appearance and same hinging design for comprehensive management of patch cords.

## RS3 CABLE MANAGEMENT RACK SYSTEM

Part #	Description
RS3-07-S . . . . .	2.1m x 0.48m steel enhanced cable management rack system, 45U. Includes rack assembly hardware, vertical cable management channels with hinged covers, and ground lug
	<i>height: 2.1m</i> <i>width: 685.0mm</i> <i>depth: 457.2mm</i>



Note: Aluminum racks (RS3-07) are available and intended for use with connecting hardware and cable managers only. For mounting of active equipment, steel racks are recommended.

Note: 1U = 44.5mm

See Cable Management Capacity Table in the Cable Management Section of our E-Catalogue on our Website

## RS3 SERIES HORIZONTAL CABLE MANAGERS

These horizontal cable managers are designed for use with Siemon's RS3 series racks and use the same hinged cover design as the vertical managers. The covers snap easily over cable managers and provide a concealed routing path into the vertical cable management of the RS3 providing a clean patching environment.

Part #	Description
RS3-RWM(X)-1 . . . . .	Single-sided 19 in. cable manager, 1U <i>height: 44.5mm</i> <i>width: 0.48m</i> <i>depth: 101.6mm</i>
RS3-RWM(X)-2 . . . . .	Single-sided 19 in. cable manager, 2U <i>height: 88.9mm</i> <i>width: 0.48m</i> <i>depth: 101.6mm</i>
RS3-RWM-2DS . . . . .	Double-sided 19 in. cable manager, 2U <i>height: 88.9mm</i> <i>width: 0.48m</i> <i>depth: 203.2mm</i>
RS3-RWM(X)-4 . . . . .	Single-sided 19 in. cable manager, 4U <i>height: 88.9mm</i> <i>width: 0.48m</i> <i>depth: 101.6mm</i>



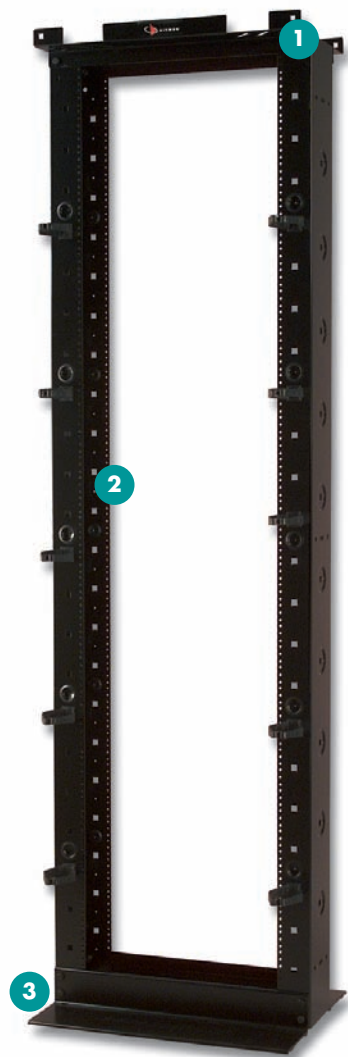
Note: 1U = 44.5mm

See Cable Management Capacity Table in the Cable Management Section of our E-Catalogue on our Website

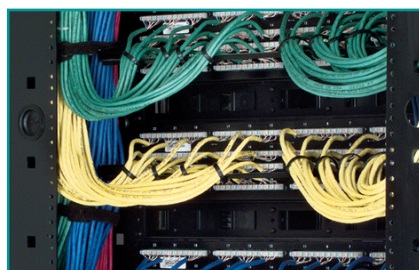
# RS Rack System

Siemon's RS series cable management rack system combines a 2.1 metre x 19 inch black rack with cable management accessories to provide a complete cable management solution. Ideal for all size installations, the rack features fully usable 45U capacity.

- 1 **Cable Tray Compatibility** – Header bars incorporate unique slotted holes for securing cable trays routed perpendicular to or parallel with RS racks
- 2 **Twist-Lock Cable Managers** – High capacity twist-lock cable managers lock into place quickly without use of screws or mounting tools and can be easily located in many positions on the front, side, back, and within channel to provide customised cable management
- 3 **Anchoring** – Mounting holes provided for anchoring rack to floor



**High Capacity Side Rails**



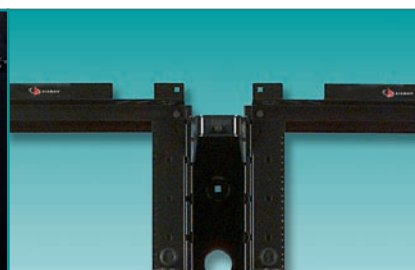
76mm x 152mm vertical side rail channels on rack provide large area for routing high volumes of horizontal or backbone cables.

**Complete Management System**



Comprehensive cable management can be created using Siemon's Vertical Patching Channels and RS Series Horizontal Cable Managers.

**Optional Vertical Cable Channels**



Optional vertical cable management channels allow a high volume of patch cords to be routed between two racks or within a single rack.



## RS RACK SYSTEM

Part #	Description
RS-07-S . . . . .	2.1m x 0.48m steel cable management rack system, 45U. Includes: rack assembly hardware, 10 high-capacity cable managers, 10 hook and loop cable managers, grommets, and ground lug <i>height: 2.1m, width: 609.6mm, depth: 457.2mm</i>

Note: Aluminum racks are available (P/N: RS-07) and intended for use with connecting hardware and cable managers only. For mounting of active equipment, steel racks are recommended.

See Cable Management Capacity Table in the Cable Management Section of our E-Catalogue on our Website



## EXTENDED DEPTH RS RACK SYSTEM

Siemon has developed a rack for managing extra large volumes of horizontal cables. The new extended depth rack features vertical channels which are 0.37m deep. These channels include multiple mounting holes allowing the user to configure Siemon's twist-lock hook and loop cable managers for properly managing large individual bundles of cables. The footers have also been designed to retain the 0.61m overall footprint.

Part #	Description
RS-07E . . . . .	2.1m x 0.48m aluminum extra-deep cable management rack system, 45U. Includes rack assembly hardware, 10 high-capacity cable managers, 10 hook and loop managers, grommets and ground lug. <i>height: 2.1m width: 609.6mm depth: 609.6mm</i>

Note: Aluminum racks are intended for use with connecting hardware and cable managers only. For mounting of active equipment, steel racks such as RS-07-S are recommended.

See Cable Management Capacity Table in the Cable Management Section of our E-Catalogue on our Website



## RS SERIES HORIZONTAL CABLE MANAGERS

Siemon's RS series cable managers are designed for use with Siemon's RS-07 racks in conjunction with Siemon's vertical patching channel. The hinged cover extends across the vertical channels of the RS-07 to fully conceal patch cords into the Vertical Patching Channel (VPC).

Part #	Description
RS-RWM-2 . . . . .	Single-sided 19 in. cable manager, 2U <i>height: 88.9mm width: 0.48m depth: 101.6mm</i>
RS-RWM-2DS . . . . .	Double-sided 19 in. cable manager, 2U <i>height: 88.9mm width: 0.48m depth: 203.2mm</i>

See Cable Management Capacity Table in the Cable Management Section of our E-Catalogue on our Website



RS-RWM-2

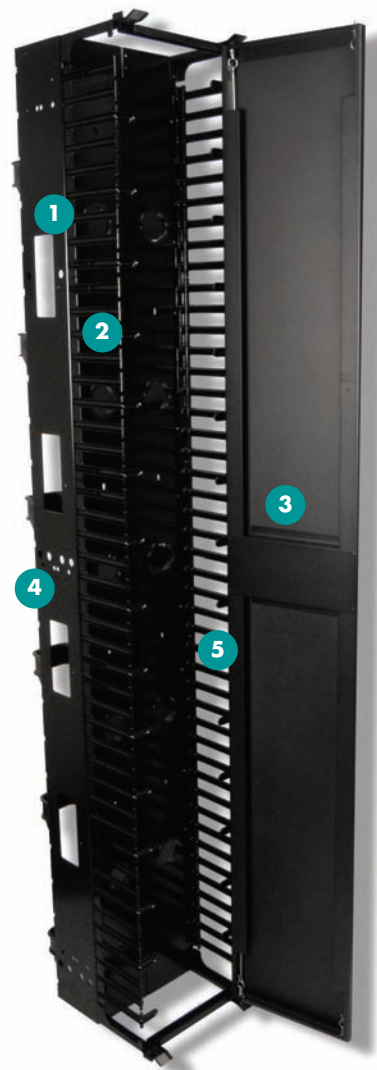


RS-RWM-2DS

# Vertical Patching Channels (VPC)

Siemon's Vertical Patching Channel (VPC) sets a new standard for cable management systems by improving appearance, accessibility and cable routing on both the front and rear of the rack. Designed as a stand-alone manager to be mounted between adjacent racks the VPC features a full length, hinged door on the front to conceal patch cord routing. The rear manager is open for ready routing of large bundles of horizontal/backbone cabling. With its easy access design, high capacity and professional appearance, the VPC is ideal for both installers and end users alike.

- 1 **Cable Access Holes** – Allow cables to route easily between the front and rear of the channel
- 2 **Rounded Managers** – All of the cable routing points on the vertical channels are rounded to allow patch cords to seamlessly enter and exit the managers without risk of cable deformation
- 3 **Full Length Hinged Covers** – With an easy turn of a single knob, the full-length cover hinges in either direction to provide access to the entire vertical channel
- 4 **Open Compatibility** – Mounting holes on side of VPC provides compatibility with common 76mm and 152mm industry racking systems including Siemon's RS-07 and XLBET frames as well as Siemon's extended depth RS-07 rack system
- 5 **Add-on Management** – Optional quarter-turn cable managers can be mounted within vertical channels for additional management such as segregation of application specific cords

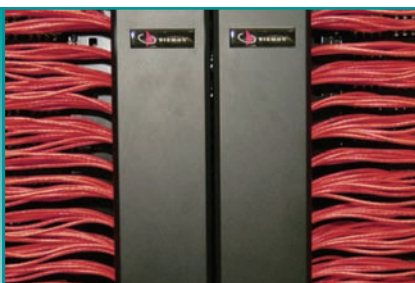


## Hinged Managers



Rear channel retainers can be hinged in either direction and are removable enabling relocation to any position along the rear vertical channel.

## Side Stackable



The VPC is fully side stackable for use in ultra high density environments. The doors can be individually opened 60° or adjacent doors can be opened for full access.

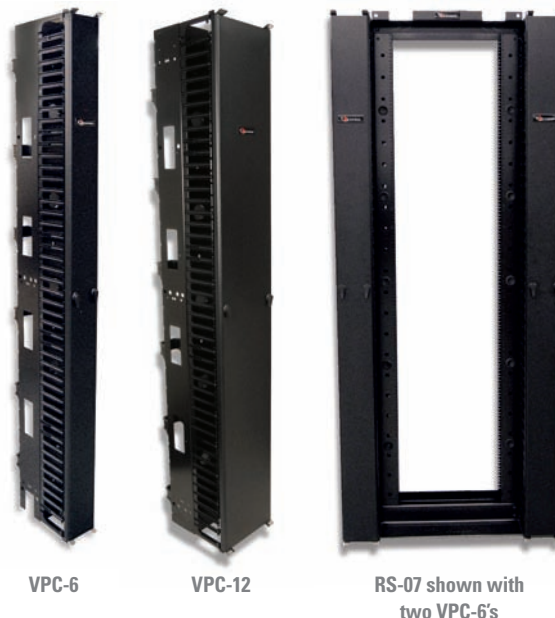
## High Capacity



The front vertical managers feature 36 - 72 sq. in. of space providing capacity to meet the rigorous demands of today's high density environments. The rear channel features the same capacity with an open design to facilitate easy routing to termination fields.

## VERTICAL PATCHING CHANNELS (VPC)

Part #	Description
VPC-6	2.1m x 152mm vertical patching channel. Includes front cover, 6 rear channel retainers and mounting hardware height: 2.1m width: 152.4mm depth: 433mm
VPC-12	2.1m x 305mm vertical patching channel. Includes front cover, 12 rear channel retainers and mounting hardware height: 2.1m width: 304.8mm depth: 433mm



See Cable Management Capacity Table in the Cable Management Section of our E-Catalogue on our Website

## VERTICAL CABLE MANAGEMENT CHANNELS

Siemon's single-sided vertical cable management channels provide an economic solution for managing large cable bundles between adjacent racks. They feature an open design with six easily configured dual-hinge managers (additional managers available separately) that enable customised management of patch cords. Cable access holes allow cords to be routed between the front and rear of the channel. Mounting holes within the channel accommodate Siemon's quarter-turn cable managers (p/n RS-CH) and quarter-turn hook and loop cable managers (p/n RS-VCM) for further customisation of cable routing. The channels are available in both 76mm and 152mm depths for use with standard 76mm racks or 152mm deep cable management racks such as Siemon's RS-07. Alternately, the 76mm deep channels can be stacked back to back with the deeper cable management racks such as Siemon's RS-07E to optimise management of cables on both sides of the channel.

RS-CNL . . . . .  
2.1m x 152mm  
vertical cable management  
channel for mounting  
between 152mm deep racks  
(includes mounting  
hardware)

height: 2.1m  
width: 152.4 mm  
depth: 224.8 mm



RS-CNL3 . . . . .  
2.1m x 76mm  
vertical cable  
management channel for  
mounting between  
76mm deep racks  
(includes mounting  
hardware)

height: 2.1m  
width: 152.4 mm  
depth: 148.6 mm



Two RS-07's shown with three RS-CNL3's

See Cable Management Capacity Table in the Cable Management Section of our E-Catalogue on our Website

## REAR CABLE MANAGER

Siemon rear cable manager can be mounted to the back side of a double-sided 19 inch rack, or can be mounted between a patch panel and the front face of the rack, using the same screws that hold the patch panel to the rack and the hex nuts provided. It provides strain relief anchor points and organisation of horizontal cables being routed to the back of the patch panel.



WM-BK . . . . . Rear cable manager with mounting screws and hex nuts



## WM SERIES HORIZONTAL CABLE MANAGERS

The WM series cable managers provide increased strength and do not interfere with panels mounted above or below. They are a popular and economical solution for providing a clean and simple means of organising small-to-large bundles of cables and patch cords.

Part #	Description
WM-143-5 . . . . .	Horizontal cable manager with five S143 hangers 1U
WM-144-5 . . . . .	Horizontal cable manager with five S144 hangers, 2U
WM-145-5 . . . . .	Horizontal cable manager with five S145 hangers, 2U

Note: 1U = 44.5mm (1.75 in.)



## CABLE HANGERS

The cable hanger design features structural integrity and sleek appearance. These cable hangers are ideal for routing small to very large quantities of cables. The durable plastic design ensures reliability for any application.

Part #	Height	Width	Depth
S143* . . . . .	44mm . . . . .	38mm . . . . .	89mm
S144* . . . . .	87mm . . . . .	57mm . . . . .	74mm
S145* . . . . .	87mm . . . . .	57mm . . . . .	125mm
S146 . . . . .	151mm . . . . .	63mm . . . . .	130mm
S147 . . . . .	254mm . . . . .	63mm . . . . .	130mm

\*Add "-A" for optional adhesive backing.



## STAND-OFF BRACKETS

Siemon hinged stand-off brackets can be mounted to a wall with the hinge on either side for convenient access to the back of the panel. The sides of the brackets will accept our S144 or S145 cable hangers for external cable management. The brackets accept any combination of Siemon patch panels and rack-mount cable management. Mounting hardware included.



**Part #**  
SBH-2 ..... 2U



**Part #**  
SBH-3 ..... 3U



**Part #**  
SBH-4 ..... 4U



**Part #**  
SBH-6\* ..... 6U



*height: See U information, width: 483mm, depth: 152mm*

*\*Add -2 for (3) independent 2U hinges (instead of a single 6U hinge).*

Note: 1U = 44.5mm